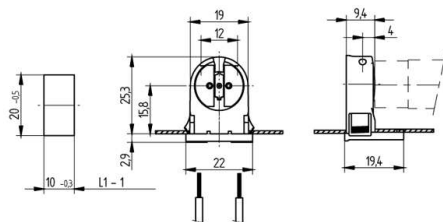


 Create pdf

## Lampholders and starter holders

26.620.2004

### G5 Push through lampholders



L1-1: Recommended dimension - The distance between the cut-outs and the tolerance should be governed by the dimensions of the respective lamps and luminaires.

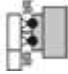

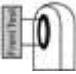


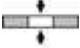
colour	pkg.	wt.	part no.
white	1000	3 g	26.620.2004.50

Approval: additional cULus (120W / 600V)

Lamp centre: 15.8 mm  
Push fixing

Housing: PC  
Rotor: PBT

- For enclosed cut-outs: 10 x 20 mm
- A pair of lampholders provides a lamp length tolerance compensation of 2 mm

T 130	Tm 110					 18 AWG 0.5 - 1.0 mm <sup>2</sup>	 0.5 - 1.5
-------	--------	---	---	---	--	--	--

Document generated on: Mo, 6. February 2017 - 11:29